



## Purchasing

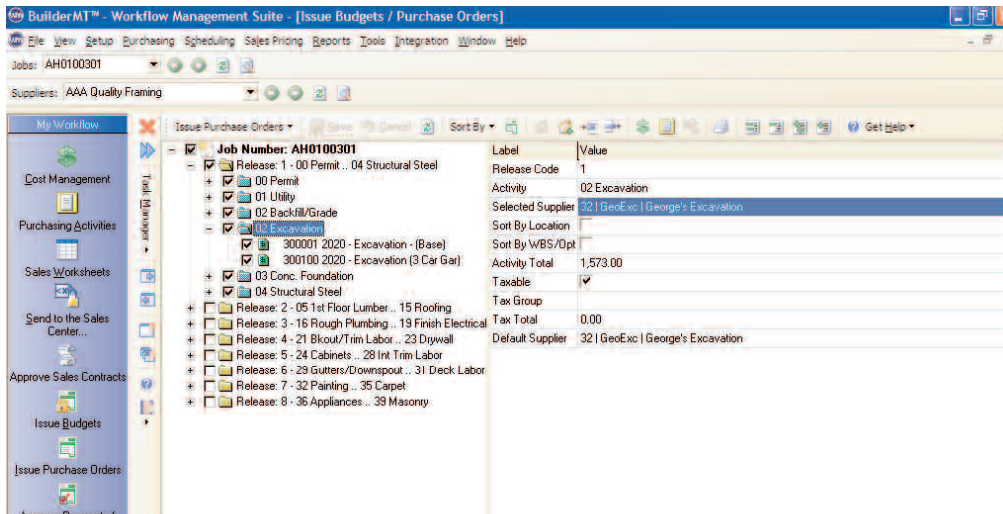
Purchasing coordinates essential homebuilding functions by providing the automation and information resources necessary to manage construction processes.

The software streamlines workflow for budget and purchase order generation directly into Job Cost, a Sage Timberline Office application. Purchasing optimizes business practices, including profit analysis, cost control, change order tracking, variance cause analysis, payment processing, custom reporting, labor and sub-trade cost management, and more.

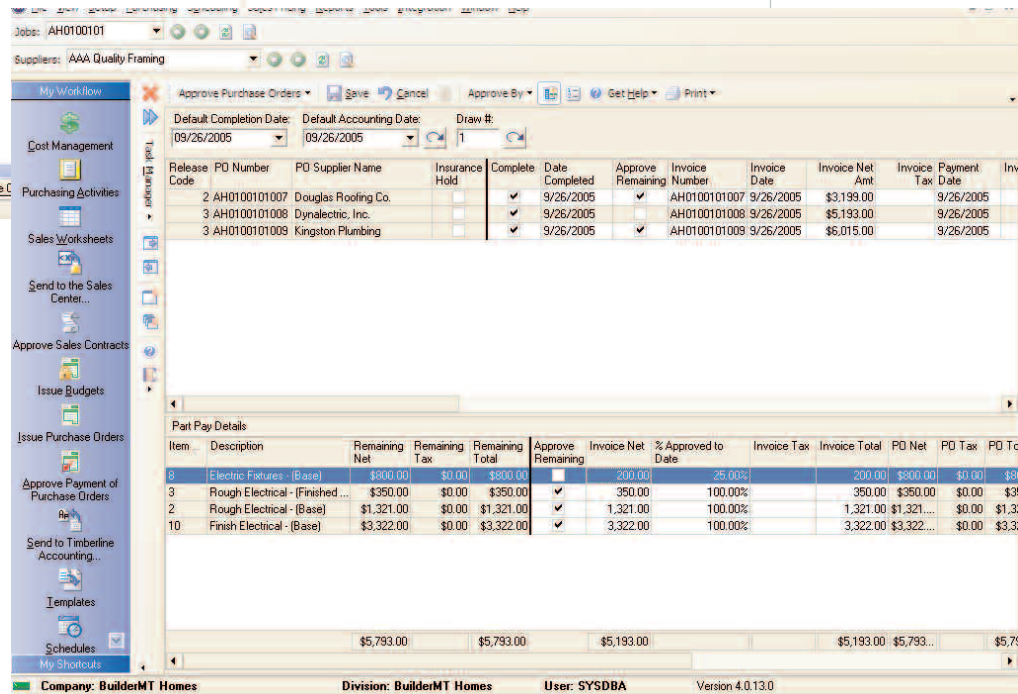
Combined with Accounting and Estimating, other Sage Timberline Office applications, builders are able to manage production, detailed estimating, and procurement.

### Features and efficiencies

- Coordinate resources, contact Trades, and suppliers automatically and issue purchase orders in hard copy, via fax, or by e-mail.
  - Track multiple vendor and subcontractor prices by model, option, and community via the cost book database. Three historical prices, as well as two future prices, can be tracked within the cost book.
  - Track suppliers' quotes to generate a total cost for every model, option, task, or item.
  - Allow your trades and suppliers to provide data electronically, via spreadsheet-style quote sheets, reducing the amount of time required to maintain your database.
  - Directly import supplier/trade pricing from common spreadsheet programs.
  - Group purchase orders into release stages.
  - Define the scope of work and payment schedule to reduce overpayment, or even double payment, to subs and suppliers.
  - Automatically generate payments based on PO approvals with Purchasing or through integration with Scheduling.
- Track sales tax on material items based on job location.
  - Track worker's compensation expiration dates for automatic notification.
  - Track retainage per trade.
  - Track discounts per supplier.
  - Generate POs based on your buyer's selection and release in stages to trades and suppliers at current prices..
  - Perform profit analysis, cost control, change-order tracking, variance cause analysis, payment processing, custom reporting, and labor or trade cost management for optimum efficiency with seamless integration to Job Cost.
  - Easily research and analyze critical information with flexible and easy-to-use report design and drill-down inquiry capabilities.



Issue purchase orders drawing from information in the models and options database and send to Job Cost.



Approve and generate only a portion of a purchase order for partial payment Transmit to Accounts Payable and automatically produce a partial invoice.



©2006 Sage Software, Inc. All rights reserved. The Sage Software logo and the Sage Software product and service names mentioned herein are registered trademarks or trademarks of Sage Software, Inc., or its affiliated entities. All other trademarks are the property of their respective owners. 01/06