



# Estimating Explorer

Estimating Explorer offers you a better solution to efficiently organize, manage and analyze your estimates.

Tracking down a specific estimate in bid logs that often contain hundreds of estimates can be a nightmare. And managing your estimates grows more complex with every bid you create.

The key to estimate control is organization. Estimating Explorer eliminates time-intensive searches by automatically creating an up-to-date master list and description of every estimate in your system. Within seconds you can sort your estimates by estimator, bid date, estimate number or a variety of other criteria to locate an estimate. Once you do, you're just one click away from the estimate's spreadsheet.

Estimating Explorer's file management tools don't end there. The software's ability to compress and archive estimates and all their associated files, not only saves you disk space but also allows instant access to all your estimates—both new and old.

Estimating Explorer also helps you keep track of your bid schedules. Log important bid events, such as bid dates, pre-bid meetings, and site inspections. And, with built-in integration to Microsoft Outlook, you'll be reminded of important Bid Due dates and times to ensure you don't miss a deadline.

Managing your estimates also means understanding the big picture. Estimating Explorer not only organizes your estimates, but gives you the tools to stand back and analyze your work. Need to know what your estimating volume is by estimator? Or your year-to-date estimate volume? You can find these and many other answers using

Estimating Explorer's management reports and graphs. Estimate information can also be exported directly to Microsoft Excel for further analysis or custom graphing.

Whether you need to zero in on estimate details or summarize your bid results, Estimating Explorer makes estimate management simpler.

## Product features

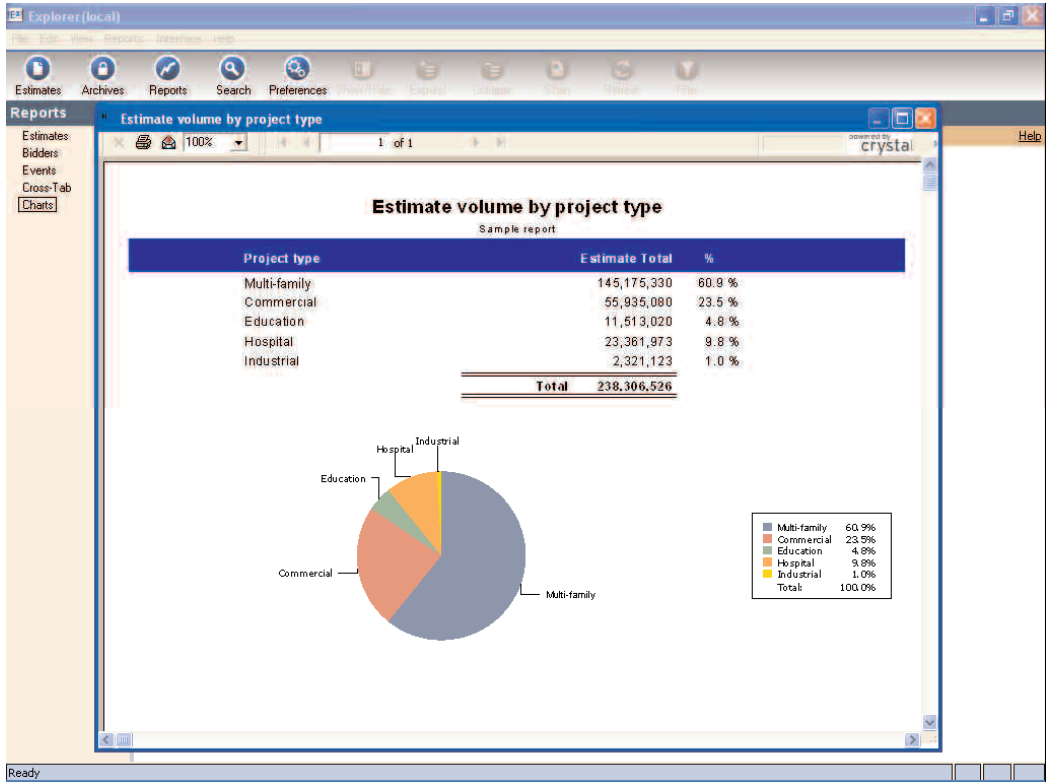
- Works with Estimating Standard or Estimating Extended software.
- 32-bit software runs on Microsoft Windows operating systems.
- ODBC-compatible (Open Database Connectivity).
- Includes Sequel backend for improved performance.
- Scans for all estimates, databases and associated files on your hard disk or server.
- Instantly locates any estimate or database in your system using a number of search options.
- Allows viewing of the estimating spreadsheet from within Explorer without launching the Estimating application.
- Manipulates spreadsheets for improved cost analysis by resorting, collapsing/expanding, show/hide columns or requesting the totals page.
- Compresses and archive all estimate and estimate-related files.
- Copies, moves, and deletes estimates and associated files simply and easily
- Tracks progress of jobs using status field (e.g., won, lost, bidding) and enables collection of competitive bid information such as names of bidders, amounts bid and bid winners.

- Stores important due dates on bid related events. Seamlessly integrates to Microsoft Outlook for automated notification.
- Allows entry of multiple user-defined bid events, such as bid due, pre-bid meeting, site inspections, and more.

## Reports

- Several built-in reports sort and summarize estimates by client, project type, estimator, status, and more.
- Includes Cross-Tab reports showing estimate volume by estimator, project type or status.
- Offers a Competitor Bid by project type report for a month, quarter, year or any specified date range.
- Provides summary bid volume graphs by project type, status, and estimator.
- Allows you to create user-defined reports and graphs using Microsoft Excel and the spreadsheet manipulation.

**Estimating Explorer** is a part of Sage Timberline Office, fully integrated software created to streamline work and connect the people you depend on to build your business.



*Estimating Explorer offers you a variety of reports and graphs to help you better manage your estimates.*



©2005 Sage Software, Inc. All rights reserved. The Sage Software logo and the Sage Software product and service names mentioned herein are registered trademarks or trademarks of Sage Software, Inc., or its affiliated entities. All other trademarks are the property of their respective owners.  
07/05

800.628.6583 | Fax 888.477.0371 | www.sagesoftwareinc.com